

Slit Lock Tuck Top Closure
 Slit Lock Tuck Bottom Closure

**STANDARD
 STRAIGHT TUCK
 (SST)**

The standard straight tuck is particularly well suited for products requiring a large window in the front display panel. Typically, both closures will tuck from the front to the rear, which avoids a raw edge showing at either end of the primary display panel. It also prevents possible interference between the tuck and the window film material, which could occur with a reverse tuck. This style is equally well suited for hand erecting and closing, or machine forming and closing.

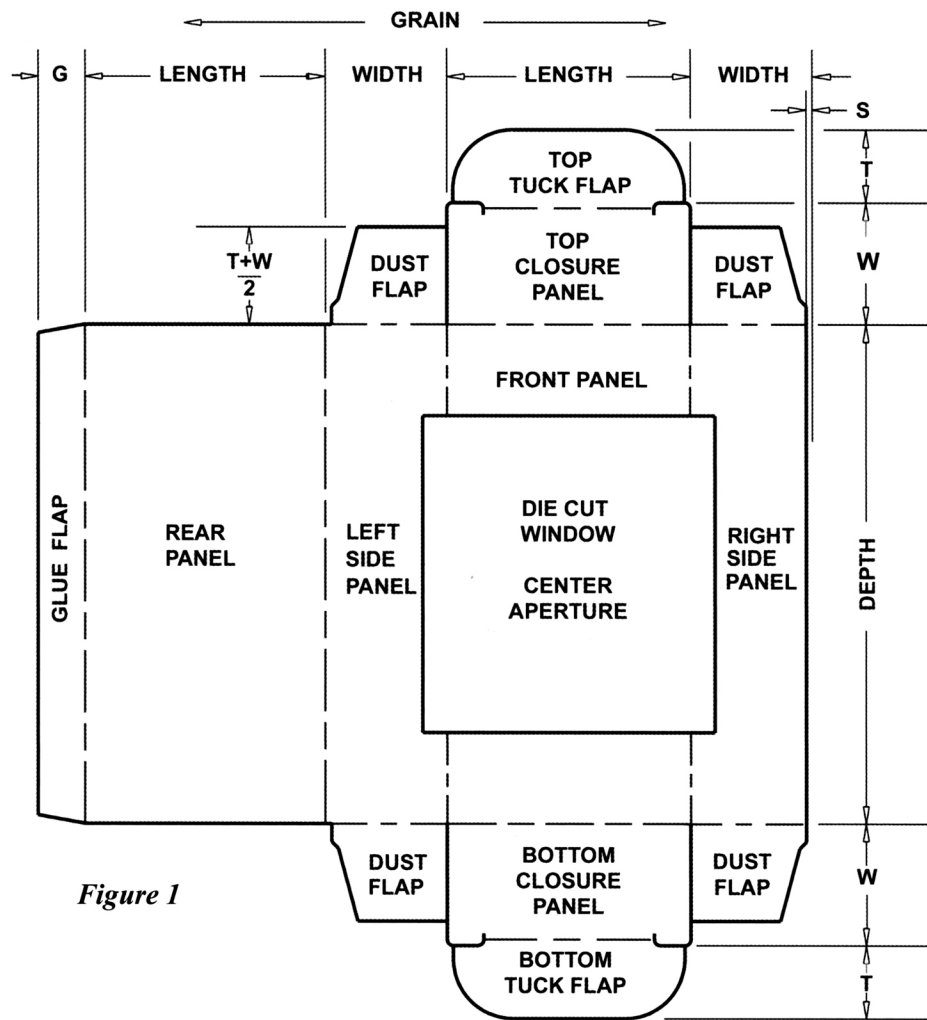


Figure 1

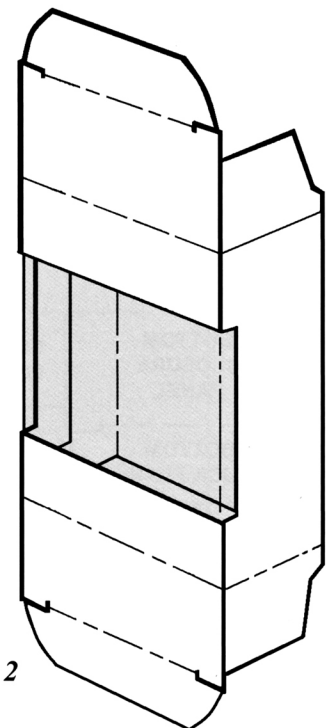


Figure 2

